

Virtual Presentation and Animation of Qingming Festival by The Riverside

Zhigeng Pan, Gengdai Liu and Zhi Li
State Key Lab of CAD&CG, Zhejiang University, Hangzhou, China
Ningbo Institute of Technology, Zhejiang University, Ningbo, China
{zgpan,liugengdai}@cad.zju.edu.cn, iback1121@yahoo.com.cn

발표자 : 정한수

Contents

1. multi-projector display wall based digital storytelling system?
2. Related Works
3. Methods fo Virtual Presentation and Animation
 - 3.1 Outline
 - 3.2 Projection system
 - 3.3 Creation of Animation
 - 3.4 Storytelling Design
4. Conclusions

Multi-projector display wall based digital storytelling system?

- In this paper, we present a novel method to display a famous ancient Chinese painting for the purpose of cultural heritage preservation.

Related Works

- made a summary of the application of virtual reality and digital media to digital heritage preservation
- the key techniques of digital museum on the internet
- the prototype system of an immersive virtual museum
- a large screen projection system using 3 projectors to display an ancient street in Hangzhou
- many IBR applications to digital museum
- a novel method to tour into the picture by making animation from a single picture using spidery mesh.

Outline



Figure 1. Qingming Festival by The Riverside

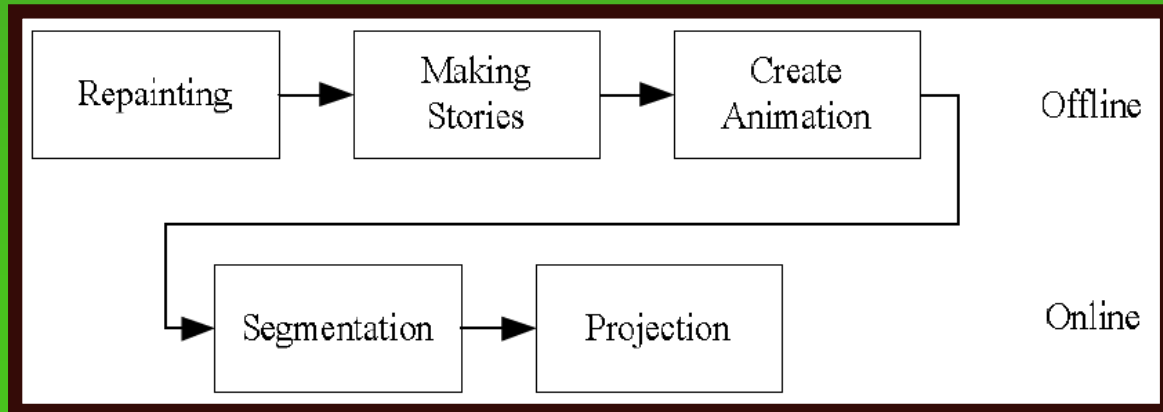
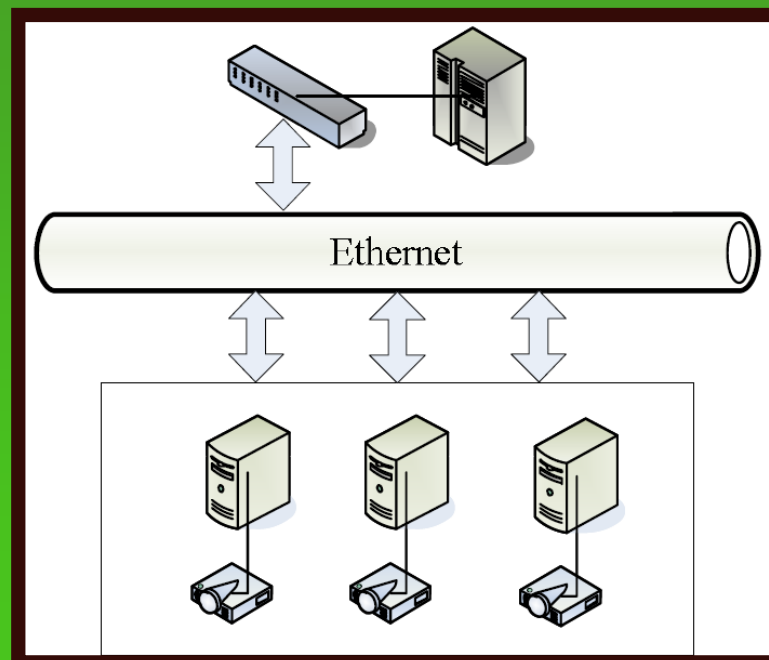


Figure 2. Procedure of our method

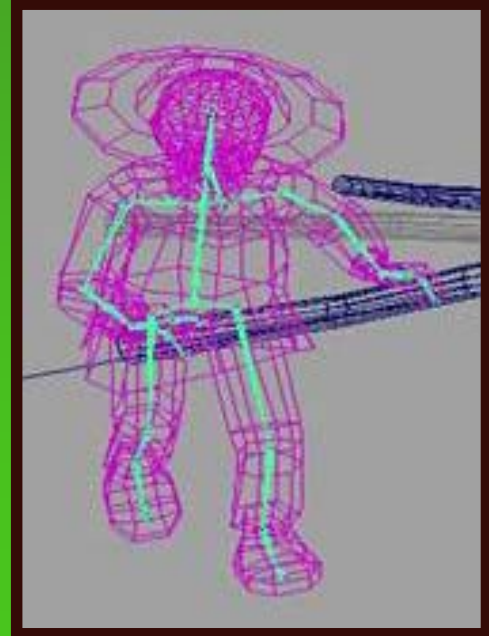
Projection system

- Display wall : 6 meters high and 12 meters wide



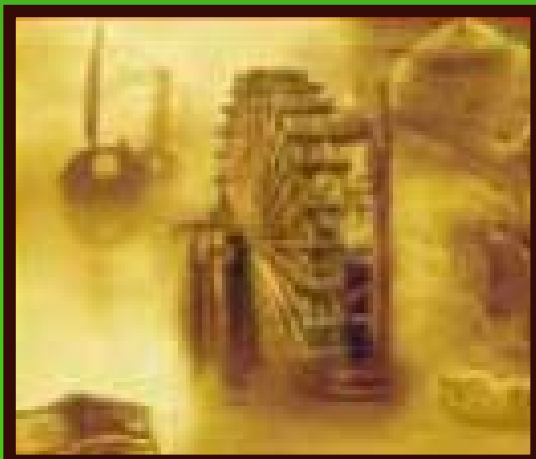
Creation of Animation

- To make the objects in the painting movable, we extracted them from the 2D background and animate them
- If the objects are characters, including humans and animals, we use skeleton-based character animation to drive them



Storytelling Design

- In order to make this static painting attractive and charming, the technology of digital storytelling is used
- So a script called *Qingming Story* is composed elaborately by us to show the magnificent scene along the river



Conclusions

- In this system, 15 projectors, 16 high-performance PCs and a multichannel switch are used for projecting a famous ancient Chinese painting on a very large display wall
- our system can only play animation video and there is no interactive capability

